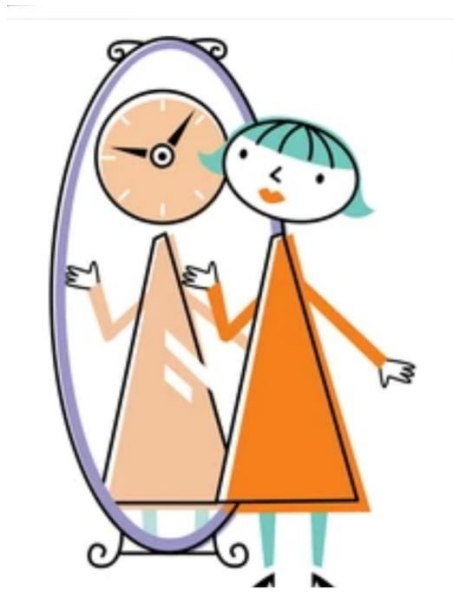


FLASHBACK!
REMEMBERING FAVORITES FROM
TIMES GONE BY



A NATIONAL GARDEN CLUBS, INC. SMALL STANDARD FLOWER SHOW

PRESENTED BY

GULF COAST GARDEN CLUB

AT

BONITA SPRINGS PUBLIC LIBRARY

10560 REYNOLDS STREET

BONITA SPRINGS, FL 34134

FREE AND OPEN TO PUBLIC

MARCH 21, 2025: 1 P.M. – 4:15 P.M.

MARCH 22, 2025: 9 A.M. – 3 P.M.

**Member of National Garden Clubs, Inc. (NGC); Deep South Garden Clubs, Inc;
Florida Federation of Garden Clubs, Inc. (FFGC), District IX, FFGC**

TABLE OF CONTENTS

Table of Contents	page 1
Committee	page 1
General Rules	page 2
Awards	page 2
Division I: Design	page 3
Division II: Horticulture	pages 4-6
Division III: Botanical Arts	page 7
Division IV: Education	page 7

FLOWER SHOW COMMITTEE

(Consult GCGC Directory for contact information.)

FFGC President	Tina Tuttle
Director, FFGC District IX	Susan Lawson
GCGC Co-Presidents	Laura Sullivan Sue Masters
Flower Show General Chairman	Dale DeFeo
Awards	Nancy McPherson
Clerks	Nancy McPherson
Design Entries/Classification	Lorna O'Hara
Design Consultant	Kathleen Hawryluk
Judges & Judges Hospitality Chairman	Laura Sullivan
Publicity	Anina Bachrach
Schedule.....	Dale DeFeo
Staging & Signage	Anne Marie Dooley
Treasurer	Diane Schmidt
Photographer	Anina Bachrach
Horticulture Classification & Botanical Arts Hort.	Reggie Wilson Dale DeFeo
Horticulture Placement	Rosemary DiLorenzo Capp Morris
Education Division	Mary King

GENERAL RULES

1. This Flower Show conforms to the standards established by National Garden Clubs, Inc. (NGC). THE HANDBOOK FOR FLOWER SHOWS (HB), 2017 edition, with any revisions published on the NGC website (gardenclub.org) is the authority for all issues not covered by the Schedule, which is THE LAW OF THE SHOW.
2. The NGC Standard System of Awarding (see HB, pg. 25) will be used throughout the show.
3. Only Gulf Coast Garden Club members may enter the show
4. Staging/Show set-up will take place on Thursday, March 20, 2025, between 12 – 2:30 p.m.
5. Entries (Design and Horticulture) will be accepted between 2:45 - 4 p.m. on Thursday, March 20 and between 9 – 10:30 a.m. on Friday, March 21, 2025. We must exit the Library by 4:20 p.m.
6. The Classification Chairman for each division will check exhibits for conformity to schedule requirements prior to judging. Final determination for conformance is the judges' responsibility.
7. The General Chairman and Classification Chairmen shall be available during judging for consultation. They, plus Judges and Clerks are the only ones allowed on the floor during judging.
8. The decision of the Judges is final.
9. Judging will commence at 11:00 a.m. on Friday, March 21, 2025.
10. Emphasis must be on FRESH plant material. No artificial plant material is permitted in any exhibit in any division.
11. Each exhibitor is limited to one entry per class in the Design Division.
12. Neither Lee County Library System, Bonita Springs Library or Gulf Coast Garden Club will be responsible for damage or loss of property.
13. Plants listed on the FLORIDA EXOTIC INVASIVE PLANT LIST are prohibited in the show. List is available at [HTTP/FRESH from Florida Plants](http://freshfromflorida.com).
14. ALL exhibits must be removed between **3 – 3:45 p.m. on Saturday, March 22, 2025.**

AWARDS

NGC Standard System of Awards will be followed: HB pg. 5

1 Blue – 90+; 1 Red -85+; 1 Yellow – 80+; 1 or more White (Honorable Mention) -75+

Top Exhibitor Awards: (See HB Chapter 5, 39-48 pp. for complete details.)

Division I: Design: 1 – Best in Show, Design Division

Division II: Horticulture: 1 – Horticulture Excellence Award (best in Horticulture Division)

Section Awards:

Arboreal Award – 1 offered in each of Section G and H. (total of 2 offered)

Award of Merit – 1 offered in each of Sections D, E, and F. (total of 3 offered)

Growers Choice Award – 1 offered in each of Sections A, B, and C. (total of 3 offered)

Division III: Botanical Arts: 1 offered – Botanical Arts Horticulture Award

Division IV: Education: 1 offered – Educational Top Exhibitor Division Award

DIVISION I: DESIGN
“DECADES OF DANCES”
DESIGN RULES

1. Design entries must be pre-registered with Lorna O’Hara by February 10, 2025.
2. All designs **MUST** contain some fresh plant material.
3. Designs must be the work of one individual.
4. Design classes are limited to four entries each except Petites, which are six entries.
5. Exhibitors may enter only one exhibit per class but may enter more than one class.
6. Fresh plant material may not be treated. Dried plant material may be treated/painted.
7. The Scale of Points for Design is listed on page 130 of the HB.
8. Entries will be accepted between 2:30 - 4 p.m. on Thursday, March 20 and 9 – 10:30 a.m. on Friday, March 21, 2025. Note: Exhibitors must exit building at 4:30 sharp on the 20th.
9. All entries **MUST** be removed between 3 – 3:45 p.m. on March 22, 2025.

ENTRIES

ONE BEST IN SHOW AWARD WILL BE OFFERED IN THE DESIGN DIVISION.

DESIGN ENTRIES/CLASSIFICATION: Lorna O’Hara, 732-221-8854

DESIGN CONSULTANT (all designs): Kathleen Hawryluk, 239-331-0267

Note: All staging furnished by committee unless otherwise indicated.

All designs **MUST** be accompanied by a 3 x 5 inch card furnished by exhibitor listing all plant material used.

Class 1. The Stroll – 1950’s 4 Entries

Creative Line Mass Design staged on half of a 6 ft. x 24-inch deep table covered in ivory cloth furnished by committee. A 36 inch tall x 24 inch wide trifold panel must be used and will be provided by committee.

Class 2. The Twist – 1960’s 4 Entries

Multi-Rhythmic Design. Two or more rhythms with emphasis on the primary one. Staged on a 44-inch high pedestal with a 24- x 24-inch white top furnished by committee.

Class 3. Disco – 1970’s 4 Entries

Reflective Design. A creative design containing reflective materials giving back images of light to the viewer. Staged on half of a 6 ft. x 24-inch table covered in ivory cloth provided by committee. A 36 inch tall x 24 inch wide trifold panel must be used and will be provided by committee.

Class 4. Moonwalk 1980’s 6 Entries

A petite creative design featuring yellow. Design not to exceed 10 inches in height and 8 inches in width or depth. Staged on a 12 inch x 12 inch back panel and 12 inch x 12 inch underlay. Background and underlay to be furnished by exhibitor.

DIVISION II: HORTICULTURE
“POPULAR MOVIES OF THE DECADES”
HORTICULTURE RULES

The NGC policies are printed in the HANDBOOK FOR FLOWER SHOWS (HB), Chapter 6, page 55, and in HORTICULTURE EXHIBITING AND JUDGING (NGC 2012).

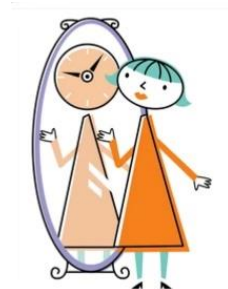
1. See pages 27-28 and pages 33-34 in the HB for specific requirements.

- a. General Rules of the Flower Show Schedule apply.
- b. Horticulture specimens must be fresh.
- c. All plant material must be grown by exhibitor.
- d. Cut specimens must be exhibited in clean, clear container furnished by exhibitor.
Exception: Sansevieria, which may be exhibited without a container.
- e. Water should be clean and without debris.
- f. Clear plastic (ex. Saran Wrap, or bubble wrap for large stems) may be used as wedging and will be furnished by the exhibitor.
- g. Container-grown specimens should be clean and unobtrusive. Decorated containers should not dominate the specimen.
- h. Staking is permitted but should be unobtrusive.
- i. Double potting is allowed but the inner container rim should be below the top of the outer container.

2. Horticulture entries must be accompanied by an entry card completed by the exhibitor.

- a. Entry cards will be made available in advance at general meetings.
- b. Botanical names must be used on the entry card. If assistance is needed, please contact a Horticulture Classification committee member prior to the show. Entry times are very limited at the show and extensive help cannot be given then.
- c. Entry card completion will be reviewed at the February general meeting.

3. Horticulture entries will be received between 2:30 - 4 p.m. on Thursday, March 20, 2025 and 9-10:30 a.m. on Friday, March 21, 2025.



DIVISION II: HORTICULTURE
“POPULAR MOVIES OF THE DECADES”

ENTRIES

SECTION A. “Some Like It Hot” (1959)

Container-grown flowering plant. Container not to exceed 12” in any dimension. Eligible for a Grower’s Choice Award.

- Class 1. *Bromeliad*
- Class 2. *Euphorbia*
- Class 3. *Kalanchoe*
- Class 4. *Orchidaceae*
- Class 5. Any other worthy specimen

SECTION B. “Singin’ in the Rain” (1952)

Container-grown foliage plant. Container not to exceed 12” in any dimension. Eligible for a Grower’s Choice Award.

- Class 6. *Bromeliad*
- Class 7. Cacti
- Class 8. *Coleus*
- Class 9. *Dracaena*, including *Sansevieria*
- Class 10. Herbs
- Class 11. *Pothos*
- Class 12. Succulents (except bromeliads and cacti)
- Class 13. Any other worthy specimen

SECTION C. “Love Me Tender” (1956)

Combination plantings in a container not to exceed 16 inches in any dimension. Eligible for a Grower’s Choice Award.

- Class 14. Dish garden
- Class 15. Planter
- Class 16. Terrarium

SECTION D. ‘Breakfast at Tiffany’s’ (1962)

Cut specimen of herbs – single cut specimen in a clear glass container furnished by exhibitor. Specimen not to exceed 16 inches in length. Eligible for an Award of Merit.

- Class 17. Basil
- Class 18. Parsley
- Class 19. *Rosmarinus* (Rosemary)
- Class 20. Any other worthy cut herb specimen

SECTION E. “Star Wars” (1977)

Cut foliage specimen, excluding trees and shrubs – single cut specimen in a clear glass container furnished by exhibitor. Specimen not to exceed 18 inches in length. Eligible for an Award of Merit.

- Class 21. *Cordyline* (ti plant)
- Class 22. *Dracaena* (except sansevieria)
- Class 23. *Dracaena* sansevieria
- Class 24. *Polypodium* (ferns)
- Class 25. *Solenostemon* (coleus)
- Class 26. Any other worthy cut foliage specimen

SECTION F. “My Fair Lady” (1964)

Cut flowering specimen, annuals or perennials – single cut specimen in a clear glass container furnished by exhibitor. Specimen not to exceed 18 inches in length. Eligible for an Award of Merit.

- Class 27. *Asclepias* (Milkweed)
- Class 28. *Gaillardia* (Blanket flower)
- Class 29. *Odotonema* (Firespike)
- Class 30. *Pentas*
- Class 31. Any other worthy cut flowering specimen.

SECTION G; “Die Hard” (1988)

Cut foliage specimen from tree or shrub – cut specimen of tree/shrub grown for foliage, exhibited in a clear glass container furnished by exhibitor. Must include apical tip. Not to exceed 30 inches in length from apical tip to cut end. Eligible for an Arboreal Award.

- Class 32. *Aucuba*
- Class 33. *Croton*
- Class 34. *Magnolia*
- Class 35. Needled Evergreen
- Class 36. *Schefflera*
- Class 37. Any other worthy cut foliage specimen from tree or shrub

SECTION H. “Back to the Future” (1985)

Cut flowering specimen from tree or shrub – exhibited in a clear glass container furnished by exhibitor. Must include apical tip. Not to exceed 30 inches in length from apical tip to cut end. Eligible for an Arboreal Award.

- Class 38. *Allamanda*
- Class 39. *Hibiscus*
- Class 40. *Ixora coccinea*
- Class 41. *Jatropha*
- Class 42. Any other worthy cut flowering specimen from tree or shrub

DIVISION III: BOTANICAL ARTS
“FAVORITE TV SHOWS”

BOTANICAL ARTS HORTICULTURE RULES

1. All Botanical Arts exhibits must be grown by the exhibitor.
2. All exhibits must be correctly named by the binomial or currently accepted scientific designation.
3. No artificial plant material is permitted.”

SECTION A. BOTANICAL ARTS HORTICULTURE

Container-grown specimens that have been manipulated in some way. Container size not to exceed 12 inches in any dimension. Must be in exhibitor’s possession for 6 months. Manipulation does not have to be done by exhibitor.

Class 1. “Bewitched” (1060s) Braided Dracaena (sansevieria)

Class 2. “Three’s Company” (1970s) Braided Dracaena sanderiana (Lucky Bamboo)

Class 3. “Golden Girls” (1980s) Trellised/espaliered plants

Class 4. “Growing Pains” (1980s) Topiaries

Class 5. “Friends” (1990s) Grafted Cactus

DIVISION IV: EDUCATION

EDUCATIONAL TELEVISION: “MISTER ROGERS’ NEIGHBORHOOD”

Eligible for the Educational Top Exhibitor Award, a Division Award.

EDUCATION DIVISION RULES

1. Schedule must list exhibit titles and briefly describe each subject.
2. If exhibitor is seeking exhibiting credit, the work must be done by an individual.
3. Plant material is not required, although NGC encourages the use of plant material where appropriate.
4. No artificial plant material is permitted in an Educational Exhibit.
5. Standard Flower Show, Small Standard Flower Show or Specialty Flower Show minimum of 18 square feet required.
6. Staged on half of a 6 ft. x 24-inch deep table.

EDUCATION EXHIBITS

Exhibit 1. What Do Flower Show Clerks Do? A description of the responsibilities and functions of flower show clerks and why they are important.

Exhibit 2. Garden Club Membership – Benefits of Belonging.

